



Campus Security Report

Updated 09/27/2016

Table of Contents

Campus Security/ Cleary Act	Page	2
Policy For Reporting Crimes and Emergencies	Page	3-4
Timely Warning	Page	5
Fire Safety Report	Page	6-7
Access Policy	Page	8
Drug and Alcohol Policy	Page	9-11
• Security Training	Page	10
• Drug and Alcohol Treatment Facilities	Page	10-11
Sex Offenses, Domestic and Dating Violence, Sexual Assault and Stalking	Page	11-15
• Cleary Act Crime Statistics Definitions	Page	11-13
• Reporting a Crime	Page	13
• Disciplinary Action	Page	13-14
• Unfounded Crimes	Page	14
• Awareness programs	Page	14-15
Registered Sex Offenders	Page	15
Hate Crimes	Page	15
Security Training	Page	15
Security Tips	Page	16
Auto Theft Prevention	Page	16
Crime Statistics	Page	17-25
Hazard and Incident Report	Page	25-28

# Eric Fisher Academy – Annual Security Report

Updated 09/27/16

The U.S. Department of Education, under 34 CFR 668.42, requires the disclosure of general information to students with regard to consumer-information regulations.

Campus Security/ Cleary Act:

The "Jeanne Cleary Disclosure of Campus Security Policy and Campus Crime Statistics Act" (originally the Crime Awareness and Campus Security Act of 1990) is a federal law that requires institutions of higher education in the United States to disclose campus security information including crime statistics for the campus and surrounding areas. It was first enacted by Congress in 1990 and amended in 1992, 1998, 2000 and 2008.

To comply with these regulations, we are providing basic information as follows:

- Annual Security Report
- Disclosure of Institution's Security Policies
- Reporting of Crime Statistics
- Encouragement of prompt reporting of crimes

To find this information, utilize any of the following resources:

- Eric Fisher Academy Web Site
- Financial Aid Office Information Resources

Included in the Student Right to Know Act:

- Financial Aid Information
- General Information about EFA
- Graduation and Job Placement Rates

To find this information, utilize any of the following resources:

- Eric Fisher Academy Web Site
- Financial Aid Office Information Resources

## **Policies for Reporting Crimes and Emergencies**

Eric Fisher Academy prepares this report to comply with the Jeanne Cleary Disclosure of Campus Security Policy, the Violence Against Women Act and Crime Statistics Act. Students, parents and staff may access this report in full at any time by going to [www.ericfisheracademy.com](http://www.ericfisheracademy.com). A complete copy of this report is also available in the EFA Office of Financial Aid and the administrative area. This report is prepared in cooperation with the Wichita Police Department.

Campus crime, arrest and referral statistics include those reported to the Wichita Police Department, and to the Director, Erin Sutton or Administration at Eric Fisher Academy.

Each year, the financial aid representative for Eric Fisher Academy will compile a crime statistics report from the incident and crime reports given to the campus security authorities (Erin Sutton, Director). EFA will annually submit the security report each year after the letter and certificate requesting is sent to the EFA Director. The crime statistics will be sent to the Department of Education each year upon the receipt of a letter requesting the crime reports. This information will be uploaded to <http://surveys.ope.ed.gov/security>.

Crime statistics from the area surrounding Eric Fisher Academy will also be requested from the Wichita Police Department and will be disclosed in the annual crime report.

Each year, an announcement will be made at the Eric Fisher Academy morning Lightning Round to all enrolled students, they will be given the web site address to access this updated report, as well at each new student orientation. A typed up notice will also be handed out to all enrolled students, which will include the URL to access the Annual Security Report as well as an overview of what is included in the report. Learning Leaders and the administrative staff will be notified via companywide e-mail. Copies of this report may also be obtained at the financial aid office or by calling 316-440-5555 ext. 314.

At Eric Fisher Academy, we strive to work together to provide a safe environment that will prepare our students for an incredible career.

### **Scope of the Report**

This report will represent statistical information on crimes that occurred at or around Eric Fisher Academy during 2013, 2014 and 2015. Eric Fisher Academy does not offer any type of campus housing or recreational facilities.

Building Location  
Eric Fisher Academy  
6727 W. Central  
Wichita, KS 67212  
316-440-5555

### **To report a crime:**

Contact the campus security authorities immediately in the event of a crime. Any Suspicious Activity or person seen in the parking lot or loitering around vehicles or inside the building should be reported to the police department. In addition, you may report a crime to any administration and/or staff member or Erin Sutton, (Director). The campus security authorities do not have arresting authority.

### ***For emergencies, dial 9-1-1.***

Every crime that is reported to the security authorities will be investigated and reported to the WPD. Please note that due to the public nature of police reports, Eric Fisher Academy cannot ensure the complete confidentiality of any crime report. All incident reports are reviewed by the Director.

Eric Fisher Academy does not have a campus police department. Wichita Police Department has sole arresting authority on the EFA campus and the surrounding areas.

Students, Learning Leaders, administrative staff, clients and community members are encouraged to report all crimes and public safety related incidents to the above designated campus security authorities. For matters of emergent nature, dial 9-1-1 immediately. Community members, students, faculty, staff and guests are encouraged to report all crimes and public safety related incidents to the Wichita Police Department (WPD) and the designated campus officials in a timely manner.

This publication contains information about on-campus and off campus resources. Information is made available to provide EFA students, Learning Leaders and staff specific information about local resources available should they become a victim of a crime. The information about local resources should be used as helpful information and does not infer that those resources are “reporting entities” for Eric Fisher Academy. Employees and Students can report a crime on a voluntary, confidential basis.

## Timely Warning

Crimes should be reported to the Eric Fisher Academy campus security authorities to ensure inclusion in the annual crime statistics and to aid in providing timely warning notices to the community, when appropriate.

If students and staff are still in the EFA building and the Director determines that there is a significant emergency or threat, the school will, without delay and accounting for the safety of the community, determine the content of the notification and initiate continuing alarm.

A campus-wide “timely warning” will be made over the intercom system with the following statement: *“EFA is now in a lock down procedure. All staff, students and guests should report to the nearest classroom immediately.”*

This announcement will be made by the EFA security authority (Erin Sutton) via the microphone (located on the right side of the stage). In the Director’s absence, designated campus officials would notify the appropriate security authority and determine the content of the notification.

- Time and safety permitting, **Guest Services** will lock the front doors, and the **Esthetics Learning Leader** will lock the back door (dog-key).
- Learning Leaders in the classrooms are to lock the classroom doors and close all blinds. Tables in the classrooms should be tipped on their sides to form a barricade on a corner spot of the classroom, far away from windows. Learning Leaders should then take roll and write down the names of any students not accounted for or extra. The classes should remain quiet and still.
- Administrative staff should lock their offices if unable to evacuate, and remain as far back from windows as possible.
- The classrooms and offices will remain locked until emergency personnel arrive and announce that the area is safe to evacuate.
- After evacuation employees, students, and guests are to gather in the parking lot at the **YMCA/EFA sign**. Staff and students are required to remain on the property until everyone has been accounted for, unless otherwise told by a member of senior management.

After evacuation, a member of management from each department will ensure all staff is present and accounted for. Each classroom or spa Learning Leader will ensure their students are present and accounted for. Each Zone Learning Leader will ensure their students are present and accounted for. We will utilize the attendance binder, guest sign-in sheets, and employee/student lists to account for everyone present in the building before anyone is excused. All safety procedures will be tested on an annual basis.

See Appendix A for Lock Down Emergency Plan

### **Fire Safety Report:**

During the last three years, EFA has had no fire-related incidents causing injury to person or property. The following is a copy of the fire and emergency evacuation action plan:

- In the event of a fire, employees are alerted by:
  - The sounding of an alarm: The building alarm system will sound in the event of a fire. Emergency alarm buttons on alarm system may be utilized in the event that police/fire/rescue is needed.
  - Public address system announcement: Time permitting; an announcement will be made by senior management from the stage, as well as an announcement over the intercom system which is transmitted throughout the building and classrooms.
  - Verbal announcement: Learning Leaders in each classroom and zone will make a verbal announcement, time and situation permitting.
  
- ALL employees, students, and guests shall calmly evacuate by means of the **nearest** available marked exit. Each office and classroom has clearly posted exit diagrams. A member of **Administration** will bring a clipboard with a current list of employees and students. A member of **Guest Services** will bring the “hold harmless” guest sign-in clipboards. **Education Manager** will bring a clipboard with a current list of employees and students, and **Student Services** will bring the attendance binder.
  
- Portable fire extinguishers are provided in the workplace in the following locations:
  - Color Bar
  - Outside Staff Lounge
  - Time Clock
  - Drinking Fountain
  - Back Corridor
  - Outside Staff Restroom

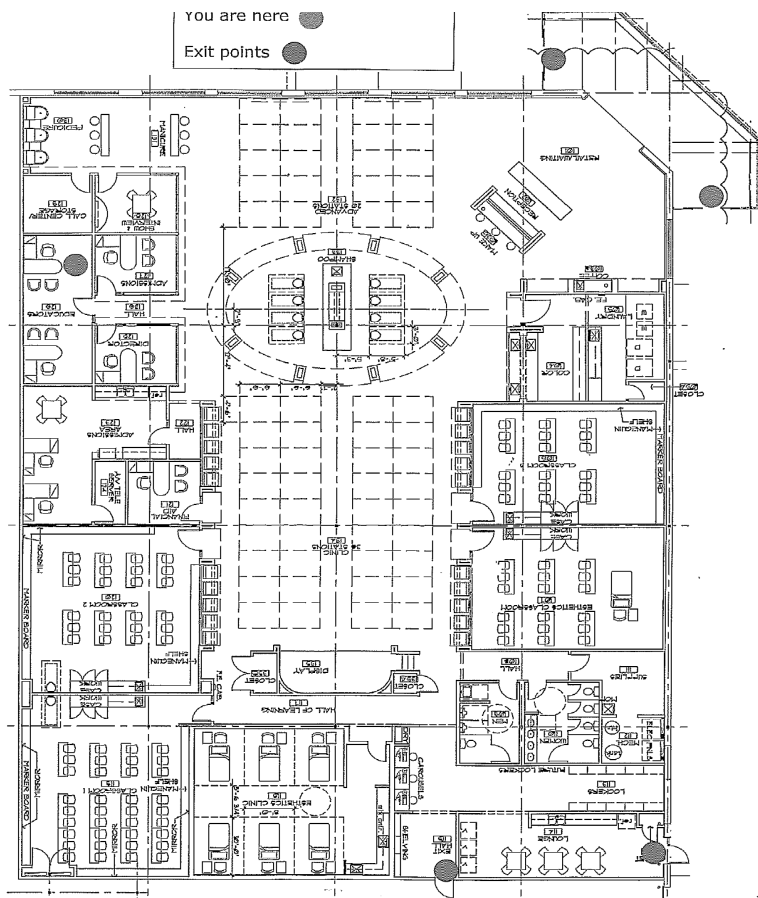
Employees or students may use extinguishers in an attempt to extinguish the fire if it is safe to do so.

- Critical operations shutdown procedures are not required, because no employees are

authorized to delay evacuation for this purpose.

- No employees are assigned to perform medical or rescue duties during emergency evacuation situations.
- After evacuation, employees, students, and guests are to gather in the following location(s): All staff and students are to meet in the parking lot at the **YMCA/EFA sign**. Staff and students are required to remain on the property until everyone has been accounted for, unless otherwise told by a member of senior management.
- After evacuation, the procedure for accounting for all employees is: A member of management from each department will ensure all staff is present and accounted for. Each classroom or spa Learning Leader will ensure their students are present and accounted for. Each Phase Learning Leader will ensure their students are present and accounted for. We will utilize the attendance binder, guest sign-in sheets, and employee/student lists to account for everyone present in the building before anyone is excused.
- For further assistance with emergency evacuation procedures, the following individuals may be contacted: Erin Sutton Academy Director (316) 516-4053

See Appendix B for Fire and Emergency Evacuation Plan



**Access Policy:**

During normal business hours, Eric Fisher Academy is open to all students, parents, employees, contractors, clients, guests and invitees. During non-business hours, access to Eric Fisher Academy is by key, if issued. In periods of extended closing, access to Eric Fisher Academy will only be granted to those issued a key, and who have obtained prior approval. Maintenance personnel are also subject to the above restrictions.

Emergencies may necessitate changes or alterations to any posted schedules. Students, Learning Leaders and staff will be notified via text message. If in lock down mode, the front desk staff will post notices on the front doors (time allowing).



## **Drug and Alcohol Policy; Substance Abuse Resources:**

At Eric Fisher Academy, the illicit use of drugs and/or alcohol by staff or students is strictly prohibited. The Academy provides an on sight drug and alcohol prevention seminar periodically conducted by the Wichita Police Department and other professionals in the Wichita area.

The use of illicit drugs and alcohol can cause numerous health problems and can lead to death. The effects to a person's health include respiratory failure, heart attack, overdose, acute intoxication and transmittable diseases such as Hepatitis C and AIDS. Thousands of deaths are caused each year by drug overdoses, allergic reactions to drugs, toxic combinations of drugs, and alcohol poisoning. For more information about the effect of alcohol and drug abuse, please visit [www.drugfree.org](http://www.drugfree.org).

The manufacture, distribution, dispensation, possession, sale, purchase, offer to buy or sell, or use of alcohol, illegal drugs or related paraphernalia and the illegal use of any drugs (including the misuse of prescription drugs) at Eric Fisher Academy campus or while engaged in the course curriculum is strictly prohibited. The Academy also prohibits such conduct during non-curriculum time to the extent that, in the judgment of Eric Fisher Academy, it impairs a student's or staff member's ability to progress through the curriculum, threatens the reputation or integrity of the Academy or violates the law. Any student who violates this policy is subject to suspension or expulsion from the program. Any staff member who violates this policy is subject to sanctions up to or including termination.

Any student or staff member who has illegal possession or engages in the illicit use of drugs or alcohol is also subject to criminal prosecution. EFA will refer violators to the appropriate authorities for prosecution. Kansas law states that any person who violates the criminal statutes on controlled substances by possessing, offering for sale, distributing, or manufacturing opiates and narcotics shall be guilty of a drug severity level three (3) felony. If convicted, the court may sentence a person to a term of imprisonment in accordance with the Kansas Sentencing Guidelines Act and a fine of up to \$300,000. Unlawful possession of a depressant, stimulant or hallucinogenic drug is punishable as a Class A non-person misdemeanor, which carries a penalty of imprisonment and a fine of up to \$2,500.

Kansas statutes also provide for criminal penalties for conviction of certain alcohol-related offenses, such as underage consumption or providing alcohol to minors. These penalties include imprisonment of up to six months and fines of up to \$1,000.

For a first offense minor in possession of alcohol charge, the penalty is:

- Up to 1 month in jail
- \$200 minimum fine (\$500 if under 18)
- 40 hours of community public service

- Required attendance in an alcohol education program
- Suspension of driver's license for 30 days

Any student or staff member who purchases alcohol for a person under the legal drinking age of 21 could be subject to a maximum penalty of 6 months in jail and a \$1,000 fine.

Students or staff members who use prescription drugs should follow the prescribing physician's directions for use and all prescriptions are to be kept in the prescription bottle with the appropriate name of the user. If use of a prescription drug may impair your performance or affect safety while performing course-related services, you should notify the Learning Leader or supervisor (if staff) immediately so the Academy can take whatever action it finds appropriate to protect your safety and that of other students and clients. Any student or staff member who violates this policy is subject to suspension or expulsion from the program.

### **Security Training**

Eric Fisher Academy periodically during the academic year provides an on sight drug and alcohol prevention by the Wichita Police Department. The designated campus security official will also go over theft and vandalism during orientation with the students. A report is updated when classes and/ or workshops training are acquired.

### **DRUG AND ALCOHOL TREATMENT FACILITIES**

If you or someone you know is struggling with drug or alcohol abuse, please call 1-877-335-HOPE (4673) or one of the treatment centers listed below.

AA Abuse Helpline-24 hours  
1-800-299-6310

Addiction Counseling Services  
1101 N. West St.  
316-263-4822

Christian Counseling Center of Wichita  
333 S. Greenwood  
316-264-8800

Women's Recovery Center  
1319 May St.  
316-262-0505

Adolescent Adult Family Recovery  
3540 W. Douglas  
316-943-2051

Wichita Treatment Center  
1044 N. Waco Ave.  
316-263-8807

Substance Abuse Center of Wichita  
731 N. Water St.  
316-267-3825

Valley Hope Alcohol & Drug Center  
901 W. Douglas Ave Wichita, KS 67213  
316-264-7369

## **Sex Offenses, Domestic Violence, Dating Violence, Sexual Assault or Stalking**

### **Clery Act Crime Statistics Definitions**

**Sex Offenses** – Forcible - any sexual act directed against another person forcibly and/or against that person’s will; or not forcibly or against the person’s will where the victim is incapable of giving consent.

**Sex Offenses** – Non-Forcible - unlawful, non-forcible sexual intercourse. The Clery Act only includes two types of offenses in this category: incest and statutory rape.

**Sexual assault** - a sex offense that meets the definition of rape or non-consent, fondling, incest or statutory rape as used in the uniform crime reporting system of the Federal Bureau of Investigation. Relationship Violence includes one or more of the following acts:

A. **Dating violence** is violence committed by a person who is or has been in a social relationship of a romantic or intimate nature with the victim.

1. The existence of such a relationship shall be determined based on the reporting party’s statement and with consideration of the length of the relationship, the type of relationship and the frequency of interaction between the persons involved in the relationship.

2. For purposes of this definition:

a) Dating violence includes, but is not limited to, sexual or physical abuse or the threat of such abuse.

b) Dating violence does not include acts covered under the definition of domestic violence.

B. **Domestic violence** is a felony or misdemeanor crime of violence committed:

1. By a current or former spouse or intimate partner of the victim;
2. By a person with whom the victim shares a child in common;
3. By a person who is cohabitating with, or has cohabitated with, the victim as a spouse or intimate partner;
4. By a person similar situated to a spouse of the victim under the domestic or family violence laws of the jurisdiction in which the crime of violence occurred, or
5. By any other person against an adult or youth victim who is protected from that person's acts under the domestic or family violence laws of the jurisdiction in which the crime of violence occurred. Kansas law protects "family and household members," which include persons 18 years of age or older who are spouses, former spouses, parents, stepparents and children or stepchildren, and persons who are presently residing together or have resided together in the past.

C. **Stalking** is engaging in a course of conduct directed at a specific person that would cause a reasonable person to:

1. Fear for the person's safety, or the safety of others; or
2. Suffer substantial emotional distress. For purposes of this definition,
  - a) *Course of Conduct* means two or more acts, including, but not limited to, acts in which the stalker directly indirectly, or through third parties, by any action, method, device, or means, follows, monitors, observes, surveils, threatens, or communicates to or about a person, or threatens with a person's property.
  - b) *Substantial emotional distress* means significant mental suffering or anguish that may, but does not necessarily, require medical or other professional treatment or counseling.
  - c) *Reasonable person* means a reasonable person under similar circumstances and with similar identities to the victim. For purposes of reporting hate crimes, sexual assaults, domestic violence, dating violence or stalking, when more

than one criminal offense is committed during a single incident, each offense must be included in the institution's Clery Act crime statistics.

### **Reporting a Sex Offense, Domestic Violence, Dating Violence, sexual Assault or Stalking**

It is the policy of Eric Fisher Academy to immediately report any sexual offense to the Wichita Police Department, whether committed on or off campus. It is imperative that victims of any kind of sexual offense report the crime to one of the EFA security authorities and/or to the Wichita Police Department. It is also important to preserve any and all evidence (i.e. clothing, objects and any other biological evidence) for the proof of a criminal offense.

When sexual assaults are committed off-campus, persons are encouraged to report to the appropriate law enforcement agency, but a student may elect, instead, to report the sexual assault to one of the campus security authorities. Any assault will be immediately reported to the Wichita Police Department. If an assault is reported to the campus security authorities, a grievance form will be provided to student.

### **Procedures if you are a Victim of Sexual Assault, Domestic Violent, Dating Violence or Stalking.**

1. Report to Police.
2. Tell the first person you see and point out the attacker.
3. Don't shower or bathe.
4. Preserve as much evidence as possible.
5. Remember all you can about the attacker such as age, height, weight, race, color of eyes-hair-clothes, type of complexion-pants-shirt-shoes.

### **Disciplinary Action for Sex Offense, domestic violence, dating violence, sexual assault or stalking Convictions**

If a student or a staff member is convicted of a sexual offense, domestic violence, dating violence, sexual assault or stalking regardless of whether or not the action took place on the EFA campus, that individual is subject to disciplinary actions by EFA. Any student or staff member may be subject to sanctions leading up to or including termination if convicted of any domestic violence, sex offense, including rape, acquaintance rape, any other forcible or non-forcible sex offenses or stalking.

All activities related to a non-criminal resolution of an institutional disciplinary complaint, including, but not limited to, fact finding investigations, formal or informal meetings and hearings. Also, EFA is obligated to comply with a student's request for an academic situating change following an *alleged* sex offense.

Both the accuser and the accused will be informed of any initial, interim, and final decisions by the Director of EFA any sanctions imposed by the institution. Additionally, both the accuser and the accused are entitled to have others present during a disciplinary proceeding. Compliance with these provisions does not constitute a violation of the Family Education Rights and Privacy Act of 1974.

### **Unfounded Crimes**

Eric Fisher Academy may withhold, or subsequently remove, a reported crime from its crime statistics in the rare situations where sworn law enforcement personnel have fully investigated the reported crime and, based on the results of this full investigation and evidence, have made a formal determination that the crime report is false or baseless and therefore “unfounded.”

### **Awareness Programs to prevent dating violence, domestic violence, sexual assault, and stalking:**

At this time, Eric Fisher Academy does not have on-campus resources for victims of a sexual assault. The following organizations are available to the community for assistance. These organizations will also provide training/education classes for our students at our campus, along with pamphlets and education material.

WASAC	(316) 263-0185
STEPSTONE	(316) 684-5120
YWCA Women’s Crisis Center	(316) 267-SAFE (7233)
Catholic Charities Harbor House	(316) 263-6000

With these organizations, their programs help prevent dating violence, domestic violence, sexual assault, and stalking including primary prevention and awareness programs directed at incoming students and new employees and ongoing prevention and awareness campaigns directed at current students and employees.

**Bystander intervention:** safe and positive options that may be carried out by an individuals to prevent harm or intervene when there is a risk of dating violence, domestic violence, sexual assault or stalking.

Bystander intervention includes:

- Recognizing situations of potential harm
- Understanding institutional structures and cultural conditions that facilitate violence, overcoming barriers to intervening, identifying safe and effective intervention options, and talking action to intervene.

**Ongoing prevention and awareness campaigns:** EFA involves the community for assistance with the education, interventions, initiatives and strategies that are sustained over time and focus on increasing understanding of topics relevant to and skills for addressing dating violence, domestic violence, sexual assault, and stalking.

**Risk Reduction:** the practice of educating ‘potential victims.’ In order to promote safety and to help individuals and communities address conditions that facilitates violence. Examples are “don’t walk alone at night.” “don’t set your drink down.” “use the buddy system.”

### **Registered Sex Offenders**

In accordance to the Campus Sex Crimes Prevention Act of 2000 (CSCPA), which amends the Jacob Wetterling Crimes Against Children and Sexually Violent Offender Registration Act, the Jeanne Cleary Act and the Family Educational Rights and Privacy Act of 1974 (FERPA), the state of Kansas is required to provide information as to the location, enrollment and/or employment of a sex offender at a post-secondary institution to local law enforcement authorities. Eric Fisher Academy is required to inform both staff and students of recourses where this information can be found. The law also requires sex offenders already required to register in a State to provide notice to each higher education institution in that State at which the person is employed, carries a vocation, or is a student. In Kansas, convicted sex offenders must register with their local Sheriff’s Office.

A list of all registered sex offenders in Kansas is available from the Kansas Bureau of Investigation at [www.accesskansas.org/kbi/ro.shtml](http://www.accesskansas.org/kbi/ro.shtml). The Eric Fisher Academy campus address is 6727 W. Central, Wichita, KS 67212. Wichita is located in Sedgwick County.

In order to determine where sex offenders are located, use either of the following links:  
[www.nsopw.gov](http://www.nsopw.gov)  
[www.wichita.gov/CityOffices/Police/Stats](http://www.wichita.gov/CityOffices/Police/Stats)

### **Hate Crimes**

Eric Fisher Academy does not condone violence or hate crimes of any kind. Further, EFA endeavors to safeguard the rights of American citizens that are mandated by the Constitution of the United States, regardless of ethnicity, national origin, religion, gender, sexual identity, disability and political or religious beliefs.

### **Security Training**

Periodically, during the academic year, Eric Fisher Academy provides educational programs conducted by professionals in the Wichita area, to promote the awareness of sexual assault (rape and acquaintance rape) and domestic violence, as well as education

sessions on personal safety. A common theme of all awareness and crime prevention programs is to encourage students and employees to be aware of their responsibility for their own security and the security of other.

## **SECURITY TIPS**

### **PERSONAL SAFETY: PROTECT YOURSELF**

Prevention is the best protection against crime.

- Don't dismiss suspicious people or situations.
- Don't put yourself in harm's way; avoid dangerous situations.
- Lock your car doors.
- Use common sense.
- Don't walk alone at night; stay in lighted areas.
- Park your vehicle in lighted areas; lock the doors.
- Keep valuables out of sight; don't tempt a thief.
- Don't give out your keys; they can be copied.
- Report all crimes and suspicious acts.

### **THINGS TO DO TO REDUCE THE RISK**

- Lock doors.
- Avoid out-of-the-way places.
- Vary your routine.
- Learn about friends' attitudes before becoming friendly.
- Watch alcohol intake.
- Leave lights on in rooms.
- Have transportation or use public transportation.

### **AUTO THEFT PREVENTION: SECURING YOUR VEHICLE**

- Always lock your car, even if you're leaving it for a short time.
- Remove the key, and do not keep a spare key hidden somewhere on the frame or body of the vehicle in a magnetic box.
- All windows should be rolled up completely. One slightly open window can render all other precautions useless.
- Park as close to the building as possible when parking at shopping malls or stores.
- Park in well lit areas. When possible park in an attended parking lot or garage. At home, park your vehicle in the garage.
- When parking in a public lot, never tell anyone how long you'll be (including the attendant). If a key must be left with an attendant, leave only the ignition key.
- Don't leave valuables visible in your car. Radios, cameras, packages, etc. attract attention and can tempt thieves to break in. Lock all valuables in the trunk.
- Never leave credit cards, checkbooks, or papers pertaining to the vehicle in the glove box. It could aid the thief in selling your car.
- Do not attach a name tag or plate to your key ring. It could lead a thief directly to your house or car if you lose your keys



## Crime Statistics

Crime statistics include all reports received by the Wichita Police Department and from the persons designated as *Campus Security Authorities* for Eric Fisher Academy.

<b>Criminal Offenses - On-campus</b>	<b>2015</b>	<b>2014</b>	<b>2013</b>
a. Murder/Non-negligent manslaughter	0	0	0
b. Negligent manslaughter	0	0	0
c. Sex offenses - Forcible	NA	NA	0
d. Rape	0	0	NA
e. Fondling	0	0	NA
f. Sex offenses - Non-forcible	NA	NA	0
g. Incest	0	0	0
h. Statutory Rape	0	0	0
i. Robbery	0	0	0
j. Aggravated assault	0	0	0
k. Burglary	0	0	0
l. Motor Vehicle theft (Does not include thief from a vehicle)	1	0	0
k. Arson	0	0	0

<b>Criminal Offenses – Public Property</b>	<b>2015</b>	<b>2014</b>	<b>2013</b>
a. Murder/Non-negligent manslaughter	0	0	0
b. Negligent manslaughter	0	0	0
c. Sex offenses - Forcible	NA	NA	0
d. Rape	0	0	NA
e. Fondling	0	0	NA
f. Sex offenses - Non-forcible	NA	NA	0
g. Incest	0	0	0
h. Statutory Rape	0	0	0
i. Robbery	0	0	0
j. Aggravated assault	0	0	0

k. Burglary	0	0	0
l. Motor Vehicle theft (Does not include thief from a vehicle)	0	0	0
k. Arson	0	0	0

## Hate Offenses

The following criminal offenses that manifest evidence of prejudice based on race, religion, sexual orientation, gender, disability or ethnicity and can be classified as Hate Crimes as prescribed by the Hate Crimes Statistics Act (28 U.S.C 534) occurred.

### Hate Crimes - On campus

Criminal offense	2015 Total	Category of Bias for crimes reported in 2014							
		Race	Religion	Sexual orientation	Gender	Gender Identity	Disability	Ethnicity	National Origin
a. <u>Murder/ Non-negligent manslaughter</u>	0	0	0	0	0	0	0	0	0
d. <u>Rape</u>	0	0	0	0	0	0	0	0	0
e. <u>Fondling</u>	0	0	0	0	0	0	0	0	0
g. <u>Incest</u>	0	0	0	0	0	0	0	0	0
h. <u>Statutory rape</u>	0	0	0	0	0	0	0	0	0
i. <u>Robbery</u>	0	0	0	0	0	0	0	0	0
j. <u>Aggravated assault</u>	0	0	0	0	0	0	0	0	0
k. <u>Burglary</u>	0	0	0	0	0	0	0	0	0
l. <u>Motor vehicle theft (Do not include theft from a motor vehicle)</u>	0	0	0	0	0	0	0	0	0
m. <u>Arson</u>	0	0	0	0	0	0	0	0	0
n. <u>Simple assault</u>	0	0	0	0	0	0	0	0	0
o. <u>Larceny-theft</u>	0	0	0	0	0	0	0	0	0
p. <u>Intimidation</u>	0	0	0	0	0	0	0	0	0
q. <u>Destruction/damage/vandalism of property</u>	0	0	0	0	0	0	0	0	0

## Hate Crimes - On campus

Criminal offense	2014 Total	Category of Bias for crimes reported in 2013					
		Race	Religion	Sexual orientation	Gender	Disability	Ethnicity/ National origin
a. <u>Murder/ Non-negligent manslaughter</u>	0	0	0	0	0	0	0
c. <u>Sex offenses - Forcible</u>	0	0	0	0	0	0	0
f. <u>Sex offenses - Non-forcible</u>	0	0	0	0	0	0	0
g. Incest	0	0	0	0	0	0	0
h. Statutory rape	0	0	0	0	0	0	0
i. <u>Robbery</u>	0	0	0	0	0	0	0
j. <u>Aggravated assault</u>	0	0	0	0	0	0	0
k. <u>Burglary</u>	0	0	0	0	0	0	0
l. <u>Motor vehicle theft</u> <i>(Do not include theft from a motor vehicle)</i>	0	0	0	0	0	0	0
m. <u>Arson</u>	0	0	0	0	0	0	0
n. <u>Simple assault</u>	0	0	0	0	0	0	0
o. <u>Larceny-theft</u>	0	0	0	0	0	0	0
p. <u>Intimidation</u>	0	0	0	0	0	0	0
q. <u>Destruction/damage/ vandalism of property</u>	0	0	0	0	0	0	0

## Hate Crimes - On campus

Criminal offense	2013 Total	Category of Bias for crimes reported in 2012					
		Race	Religion	Sexual orientation	Gender	Disability	Ethnicity/ National origin
a. <u>Murder/ Non-negligent manslaughter</u>	0	0	0	0	0	0	0
c. <u>Sex offenses - Forcible</u>	0	0	0	0	0	0	0
f. <u>Sex offenses - Non-forcible</u>	0	0	0	0	0	0	0
g. <u>Incest</u>	0	0	0	0	0	0	0
h. <u>Statutory rape</u>	0	0	0	0	0	0	0
i. <u>Robbery</u>	0	0	0	0	0	0	0
j. <u>Aggravated assault</u>	0	0	0	0	0	0	0
k. <u>Burglary</u>	0	0	0	0	0	0	0
l. <u>Motor vehicle theft</u>	0	0	0	0	0	0	0
m. <u>Arson</u>	0	0	0	0	0	0	0
n. <u>Simple assault</u>	0	0	0	0	0	0	0
o. <u>Larceny-theft</u>	0	0	0	0	0	0	0
p. <u>Intimidation</u>	0	0	0	0	0	0	0
q. <u>Destruction/damage/ vandalism of property</u>	0	0	0	0	0	0	0

## Hate Crimes - Public Property

Criminal offense	2015 Total	Category of Bias for crimes reported in 2014							
		Race	Religion	Sexual orientation	Gender	Gender Identity	Disability	Ethnicity	National origin
<u>Murder/ Non-negligent manslaughter</u>	0	0	0	0	0	0	0	0	0
<u>Rape</u>	0	0	0	0	0	0	0	0	0
<u>Fondling</u>	0	0	0	0	0	0	0	0	0
<u>Incest</u>	0	0	0	0	0	0	0	0	0
<u>Statutory rape</u>	0	0	0	0	0	0	0	0	0
<u>Robbery</u>	0	0	0	0	0	0	0	0	0
<u>Aggravated assault</u>	0	0	0	0	0	0	0	0	0
<u>Burglary</u>	0	0	0	0	0	0	0	0	0
<u>Motor vehicle theft (do not include theft of a motor vehicle)</u>	0	0	0	0	0	0	0	0	0
<u>Arson</u>	0	0	0	0	0	0	0	0	0
<u>Simple assault</u>	0	0	0	0	0	0	0	0	0
<u>Larceny-theft</u>	0	0	0	0	0	0	0	0	0
<u>Intimidation</u>	0	0	0	0	0	0	0	0	0
<u>Destruction/damage</u>	0	0	0	0	0	0	0	0	0
<u>Defacement of property</u>	0	0	0	0	0	0	0	0	0

## Hate Crimes - Public Property

Criminal offense	2014 Total	Category of Bias for crimes reported in 2013					
		Race	Religion	Sexual orientation	Gender	Disability	Ethnicity/ National origin
a. <u>Murder/ Non-negligent manslaughter</u>	0	0	0	0	0	0	0
c. <u>Sex offenses - Forcible</u>	0	0	0	0	0	0	0
f. <u>Sex offenses - Non-forcible</u>	0	0	0	0	0	0	0
g. Incest	0	0	0	0	0	0	0
h. Statutory rape	0	0	0	0	0	0	0
i. <u>Robbery</u>	0	0	0	0	0	0	0
j. <u>Aggravated assault</u>	0	0	0	0	0	0	0
k. <u>Burglary</u>	0	0	0	0	0	0	0
l. <u>Motor vehicle theft</u> <i>(Do not include theft from a motor vehicle)</i>	0	0	0	0	0	0	0
m. <u>Arson</u>	0	0	0	0	0	0	0
n. <u>Simple assault</u>	0	0	0	0	0	0	0
o. <u>Larceny-theft</u>	0	0	0	0	0	0	0
p. <u>Intimidation</u>	0	0	0	0	0	0	0
q. <u>Destruction/damage/ vandalism of property</u>	0	0	0	0	0	0	0

## Hate Crimes - Public Property

Criminal offense	2013 Total	Category of Bias for crimes reported in 2012					
		Race	Religion	Sexual orientation	Gender	Disability	Ethnicity/ National origin
a. <u>Murder/ Non-negligent manslaughter</u>	0	0	0	0	0	0	0
c. <u>Sex offenses - Forcible</u>	0	0	0	0	0	0	0
f. <u>Sex offenses - Non-forcible</u>	0	0	0	0	0	0	0
g. Incest	0	0	0	0	0	0	0
h. Statutory rape	0	0	0	0	0	0	0
i. <u>Robbery</u>	0	0	0	0	0	0	0
j. <u>Aggravated assault</u>	0	0	0	0	0	0	0
k. <u>Burglary</u>	0	0	0	0	0	0	0
l. <u>Motor vehicle theft</u>	0	0	0	0	0	0	0
m. <u>Arson</u>	0	0	0	0	0	0	0
n. <u>Simple assault</u>	0	0	0	0	0	0	0
o. <u>Larceny-theft</u>	0	0	0	0	0	0	0
p. <u>Intimidation</u>	0	0	0	0	0	0	0
q. <u>Destruction/damage/ vandalism of property</u>	0	0	0	0	0	0	0

## VAWA Offenses - On Campus

Crime	Total occurrences On Campus		
	2013	2014	2015
a. <u>Domestic violence</u>	NA	0	0
b. <u>Dating violence</u>	NA	0	0
c. <u>Stalking</u>	NA	0	0

## VAWA Offenses - Public Property

Crime	Total occurrences on Public Property		
	2013	2014	2015
a. <u>Domestic violence</u>	NA	1	0
b. <u>Dating violence</u>	NA	0	0
c. <u>Stalking</u>	NA	0	0

### Arrests

<b>Arrests - On-campus</b>	<b>2015</b>	<b>2014</b>	<b>2013</b>
a. Weapons: Carrying, Possessing, Etc.	0	0	0
b. Drug abuse violations	0	0	0
c. Liquor law violations	0	0	0

<b>Disciplinary Actions/Judicial Referrals - On-campus</b>	<b>2015</b>	<b>2014</b>	<b>2013</b>
a. Weapons: Carrying, Possessing, Etc.	0	0	0
b. Drug abuse violations	0	0	0
c. Liquor law violations	0	0	0

<b>Arrests - Public Property</b>	<b>2015</b>	<b>2014</b>	<b>2013</b>
a. Weapons: Carrying, Possessing, Etc.	0	0	0
b. Drug abuse violations	0	0	0
c. Liquor law violations	0	0	0

<b>Disciplinary Actions/Judicial Referrals - Public Property</b>	<b>2015</b>	<b>2014</b>	<b>2013</b>
a. Weapons: Carrying, Possessing, Etc.	0	0	0
b. Drug abuse violations	0	0	0
c. Liquor law violations	0	0	0



## Unfounded Crimes

	Number		
	2013	2014	2015
a. <u>Total unfounded crimes</u>	NA	0	0

### **HAZARD AND INCIDENT REPORT**

At EFA, we strive to keep a safe and fun learning environment. However, accidents are inevitable. Accident and injury forms are available for students, staff and guests should any situation arise. We encourage the prompt use of these forms. Ask any Learning Leader, front desk assistant or administrative staff member for a form should the need arise.

**Eric Fisher Academy, Inc.**  
**Hazard and Incident Report Form**

**SECTION A** – DETAILS OF PERSON INVOLVED IN INCIDENT OR REPORTING

HAZARD

Name: \_\_\_\_\_ Phone: \_\_\_\_\_ / \_\_\_\_\_

Address: \_\_\_\_\_ City \_\_\_\_\_ State: \_\_\_\_\_

Zip: \_\_\_\_\_

Staff  Student  Guest

---

**SECTION B** – INCIDENT DETAILS OR NATURE OF HAZARD OR DAMAGE (Use separate sheet if necessary)

Date of Incident: \_\_\_\_/\_\_\_\_/\_\_\_\_ Time: \_\_\_\_\_ am/pm

Location of Incident, Hazard, or Damage: \_\_\_\_\_

\_\_\_\_\_  
\_\_\_\_\_  
\_\_\_\_\_.

Brief Description of Incident, Hazard, Fire, Damage, etc. (what happened?): \_\_\_\_\_

\_\_\_\_\_  
\_\_\_\_\_  
\_\_\_\_\_.

If injury occurred and injured person is under the age of 18 or otherwise dependent, please complete the following:

Name of Father/Male Guardian: \_\_\_\_\_ Phone: \_\_\_\_\_

Name of Mother/Female Guardian: \_\_\_\_\_ Phone: \_\_\_\_\_

Address of parents/guardians: \_\_\_\_\_.

Signature of injured person: \_\_\_\_\_ Date: \_\_\_\_/\_\_\_\_/\_\_\_\_

Signature of parent/guardian if under 18: \_\_\_\_\_ Date: \_\_\_\_/\_\_\_\_/\_\_\_\_

Describe injuries/illness including part(s) and side(s) of body affected:

\_\_\_\_\_  
\_\_\_\_\_  
\_\_\_\_\_.

---

**SECTION C – WITNESSES TO INCIDENT, HAZARD, OR DAMAGE**

List of witnesses or first person on scene:

Name: \_\_\_\_\_ Address: \_\_\_\_\_

Phone: \_\_\_\_\_ Comments: \_\_\_\_\_

\_\_\_\_\_  
\_\_\_\_\_

Name: \_\_\_\_\_ Address: \_\_\_\_\_

Phone: \_\_\_\_\_ Comments: \_\_\_\_\_

\_\_\_\_\_  
\_\_\_\_\_

Name: \_\_\_\_\_ Address: \_\_\_\_\_

Phone: \_\_\_\_\_ Comments: \_\_\_\_\_

\_\_\_\_\_  
\_\_\_\_\_

---

**SECTION D – SUPERVISOR/MANAGEMENT NOTIFICATION**

Name of Supervisor/Member of Management Incident, Hazard, or Damage reported to: \_\_\_\_\_

Date/Time of notification: \_\_\_\_/\_\_\_\_/\_\_\_\_, \_\_\_\_ am/pm

Supervisor's Notes: \_\_\_\_\_

\_\_\_\_\_  
\_\_\_\_\_  
\_\_\_\_\_  
\_\_\_\_\_.

Signature of Supervisor/Member of Management: \_\_\_\_\_

Title: \_\_\_\_\_ Phone: \_\_\_\_\_ Date: \_\_\_\_/\_\_\_\_/\_\_\_\_

Additional Notes/Comments re: Investigation, Preventative Action,  
Recommendations, Maintenance, Repairs, etc. (attach any necessary documents):

---

---

---

---

---

---

S:\Financial Aid\Financial Aid Administration\Policies and Procedures\CAMPUS SECURITY\Cleary Act 2014 10.1.14.doc